



Districting Draft Maps

January 20, 2022

Dr. Jeff Tilton, Senior Consultant
National Demographics Corporation

Election Systems

1. “At Large”
2. “From District” or “Residence” Districts
3. “By District”

The California Voting Rights Act was written to specifically encourage by-district elections.

California Voting Rights Act (CVRA)

- Under the Federal Voting Rights Act (passed in 1965), a jurisdiction must fail 4 factual tests before it is in violation of the law.

- The California VRA makes it significantly easier for plaintiffs to force jurisdictions into “by-district” election systems by eliminating two of the US Supreme Court Gingles tests:
 - ~~■ Can the protected class constitute the majority of a district?~~
 - Does the protected class vote as a bloc?
 - Do the voters who are not in the protected class vote in a bloc to defeat the preferred candidates of the protected class?
 - ~~■ Do the “totality of circumstances” indicate race is a factor in elections?~~

- Liability is now determined only by the presence of racially polarized voting

CVRA Impact

❑ Switched (or in the process of switching) as a result of CVRA:

- At least 240 school districts
- 34 Community College Districts
- 154 cities
- 1 County Board of Supervisors
- 35 water and other special districts.

❑ Cases So Far:

- Palmdale, Santa Clara and Santa Monica went to trial on the merits. Palmdale and Santa Clara lost. Santa Monica is awaiting a decision.
- Modesto and Palmdale each spent about \$1.8 million on their defense (in addition to the attorney fee awards in those cases).
- Santa Monica has spent an estimated \$7 million so far. Plaintiffs in Santa Monica requested \$22 million in legal fees after the original trial.

Key settlements:

- ✓ Palmdale: \$4.7 million
- ✓ Modesto: \$3 million
- ✓ Highland: \$1.3 million
- ✓ Anaheim: \$1.1 million
- ✓ Whittier: \$1 million
- ✓ Santa Barbara: \$600,000
- ✓ Tulare Hospital: \$500,000
- ✓ Camarillo: \$233,000
- ✓ Compton Unified: \$200,000
- ✓ Madera Unified: about \$170,000
- ✓ Hanford Joint Union Schools: \$118,000
- ✓ Merced City: \$42,000

An estimated \$16 million in total settlements and court awards so far.

Districting Process

Step	Description
Two Initial Hearings August 19 & September 16 <i>6:30 p.m.</i>	<ul style="list-style-type: none"> • Held prior to release of draft maps • Education and to solicit input on the communities in the Districts
Census Data Release Mid/Late August	<ul style="list-style-type: none"> • Census Bureau releases official 2020 Census population data
California Data Release Early October 2021	<ul style="list-style-type: none"> • California Statewide Database releases California's official 'prisoner-adjusted' 2020 redistricting data
Draft Map Hearing January 20, 2022	<ul style="list-style-type: none"> • Discuss and select final maps; discuss election sequence
Draft Map Hearing February 10, 2022 <i>6:30 p.m.</i>	<ul style="list-style-type: none"> • Discuss and select final map; discuss and determine election sequence • Deadline to submit draft maps: January 28, 2022, 5 p.m. • Post draft maps by February 3, 2022, 5 p.m.
Map Adoption By March 1, 2022	<ul style="list-style-type: none"> • Final map must be posted at least 7 days prior to adoption

Districting Rules and Goals

Federal Laws

- Equal Population
- Federal Voting Rights Act
- No Racial Gerrymandering



California Criteria

1. **Geographically contiguous**
2. **Undivided neighborhoods and “communities of interest”**
(Socio-economic geographic areas that should be kept together)
3. **Easily identifiable boundaries**
4. **Compact**
(Do not bypass one group of people to get to a more distant group of people)

Other Traditional Redistricting Principles

- Respect voters’ choices / avoid head-to-head contests
- Future population growth

Prohibited: “Shall not favor or discriminate against a political party.”

Neighborhoods/Communities of Interest

Neighborhoods

1. **What is your neighborhood?**
2. **What are its geographic boundaries?**

In the absence of public testimony, planning records and other similar documents may provide definition.

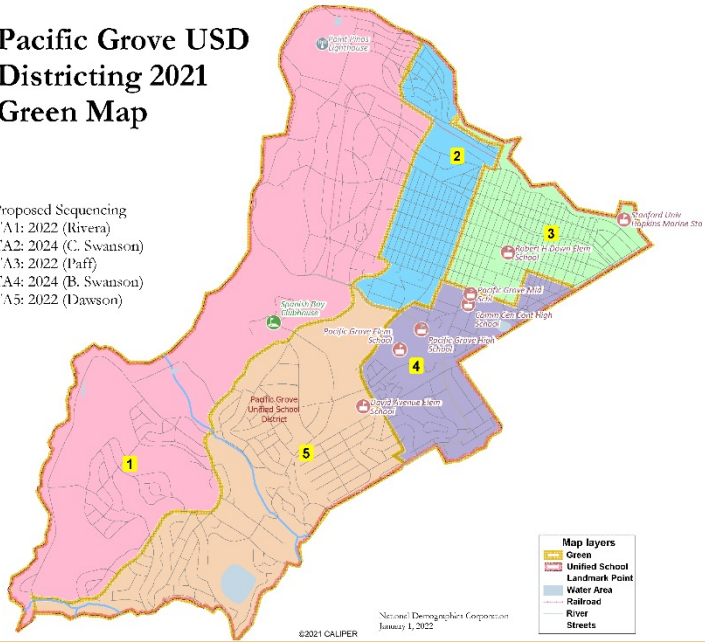
Communities of Interest

1. **What defines your community?**
2. **Would this community benefit from being “included within a single district for purposes of its effective and fair representation”?**

Communities of Interest may not include relationships with political parties, incumbents, or political candidates.

Pacific Grove USD Districting 2021 Green Map

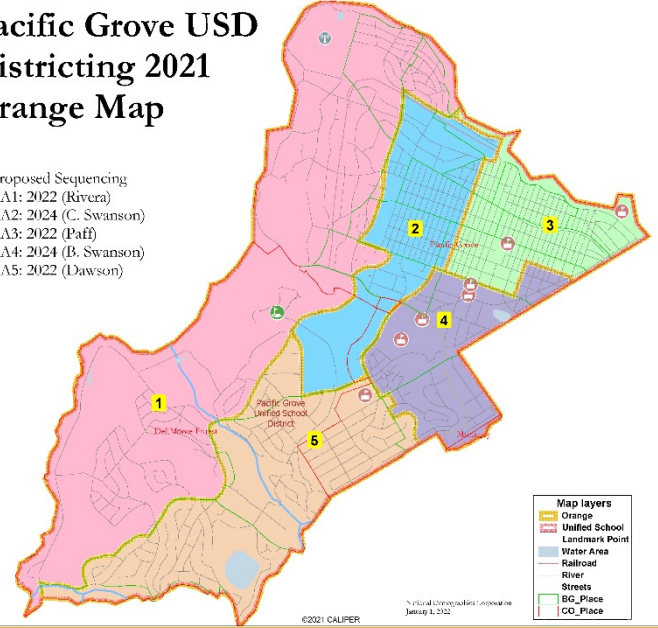
Proposed Sequencing
 TA1: 2022 (Rivera)
 TA2: 2024 (C. Swanson)
 TA3: 2022 (Paff)
 TA4: 2024 (B. Swanson)
 TA5: 2022 (Dawson)



©2021 CALPER National Demographics Corporation January 1, 2022

Pacific Grove USD Districting 2021 Orange Map

Proposed Sequencing
 TA1: 2022 (Rivera)
 TA2: 2024 (C. Swanson)
 TA3: 2022 (Paff)
 TA4: 2024 (B. Swanson)
 TA5: 2022 (Dawson)

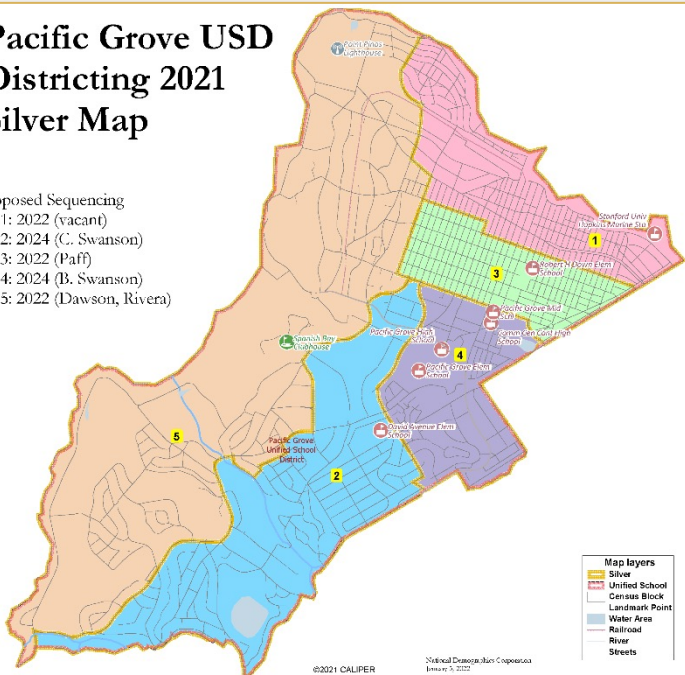


©2021 CALPER National Demographics Corporation January 1, 2022

The Draft Maps

Pacific Grove USD Districting 2021 Silver Map

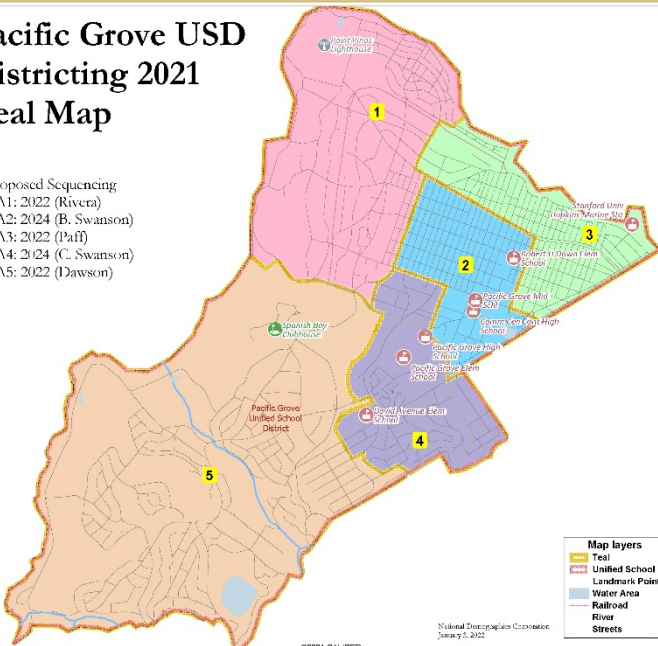
Proposed Sequencing
 TA1: 2022 (vacant)
 TA2: 2024 (C. Swanson)
 TA3: 2022 (Paff)
 TA4: 2024 (B. Swanson)
 TA5: 2022 (Dawson, Rivera)



©2021 CALPER National Demographics Corporation January 1, 2022

Pacific Grove USD Districting 2021 Teal Map

Proposed Sequencing
 TA1: 2022 (Rivera)
 TA2: 2024 (B. Swanson)
 TA3: 2022 (Paff)
 TA4: 2024 (C. Swanson)
 TA5: 2022 (Dawson)

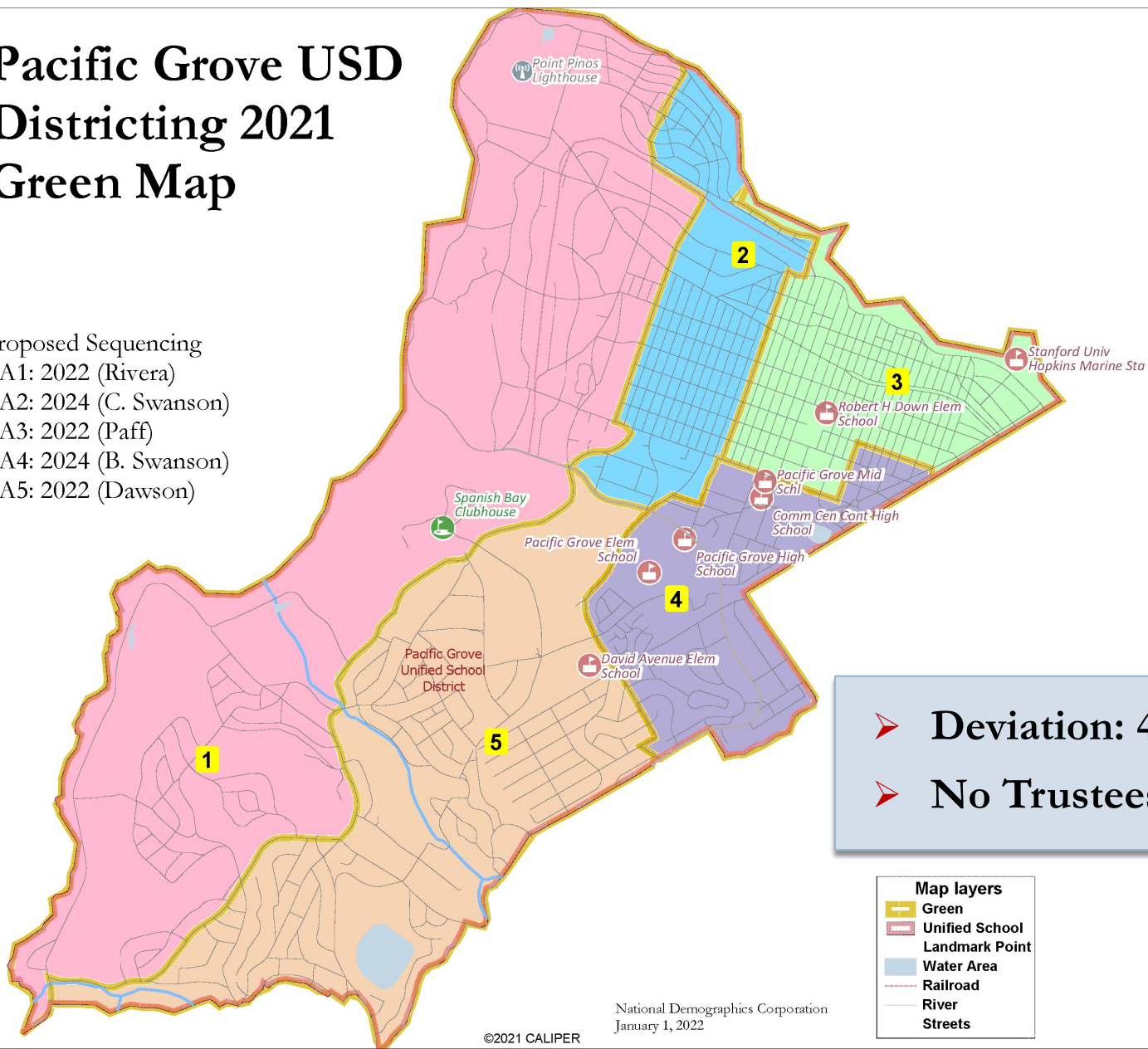


©2021 CALPER National Demographics Corporation January 1, 2022

Pacific Grove USD Districting 2021 Green Map

Proposed Sequencing

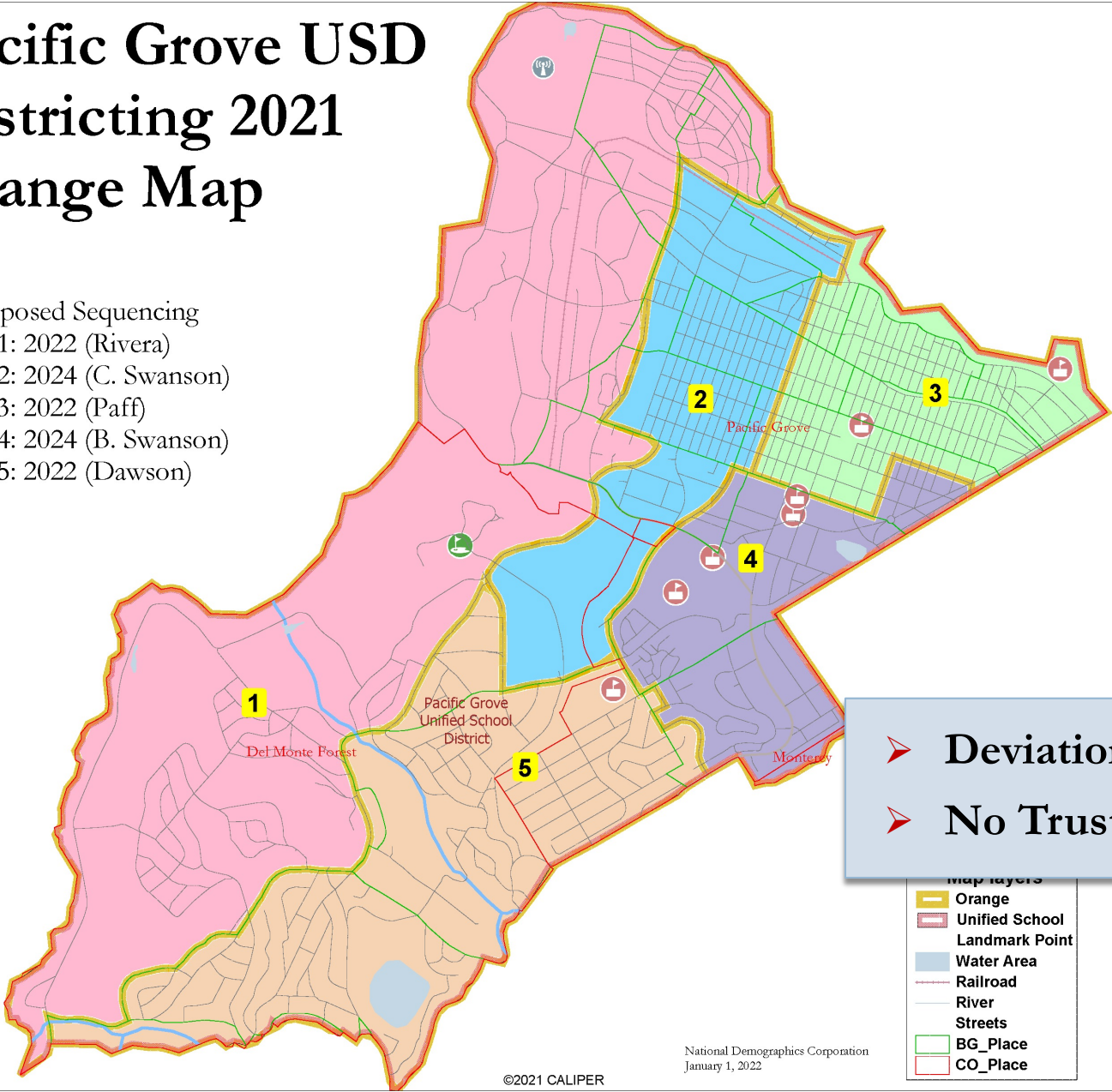
- TA1: 2022 (Rivera)
- TA2: 2024 (C. Swanson)
- TA3: 2022 (Paff)
- TA4: 2024 (B. Swanson)
- TA5: 2022 (Dawson)



➤ **Deviation: 4.04%**
 ➤ **No Trustees paired**

Pacific Grove USD Districting 2021 Orange Map

Proposed Sequencing
 TA1: 2022 (Rivera)
 TA2: 2024 (C. Swanson)
 TA3: 2022 (Paff)
 TA4: 2024 (B. Swanson)
 TA5: 2022 (Dawson)



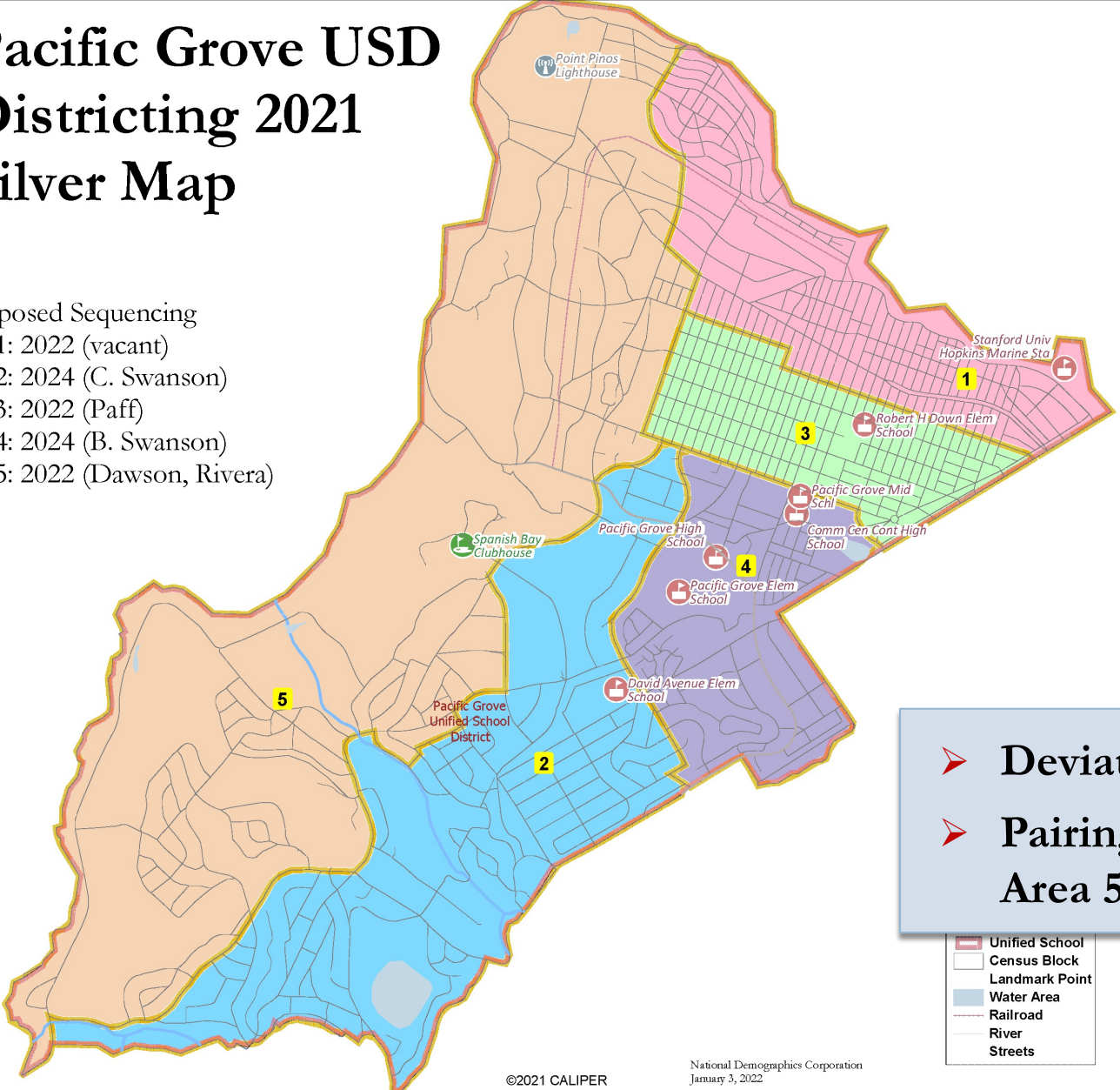
➤ **Deviation: 1.12%**
 ➤ **No Trustees paired**

National Demographics Corporation
 January 1, 2022

©2021 CALIPER

Pacific Grove USD Districting 2021 Silver Map

Proposed Sequencing
 TA1: 2022 (vacant)
 TA2: 2024 (C. Swanson)
 TA3: 2022 (Paff)
 TA4: 2024 (B. Swanson)
 TA5: 2022 (Dawson, Rivera)



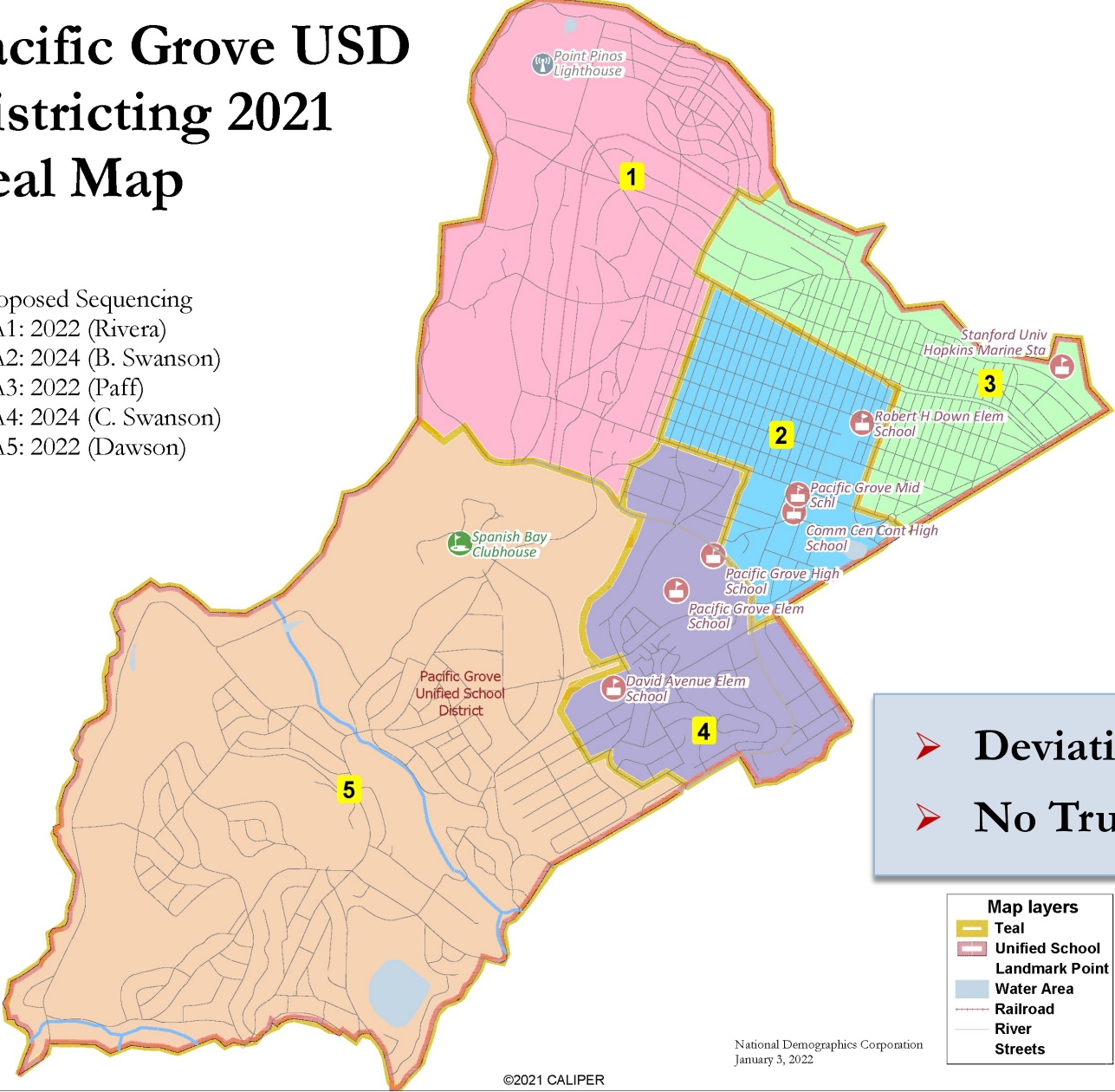
➤ **Deviation: 4.69%**
 ➤ **Pairing in Trustee Area 5**

- Unified School
- Census Block
- Landmark Point
- Water Area
- Railroad
- River
- Streets

©2021 CALIPER National Demographics Corporation January 3, 2022

Pacific Grove USD Districting 2021 Teal Map

Proposed Sequencing
 TA1: 2022 (Rivera)
 TA2: 2024 (B. Swanson)
 TA3: 2022 (Paff)
 TA4: 2024 (C. Swanson)
 TA5: 2022 (Dawson)



➤ **Deviation: 4.92%**
 ➤ **No Trustees paired**

- Map layers**
- Teal
 - Unified School
 - Landmark Point
 - Water Area
 - Railroad
 - River
 - Streets

National Demographics Corporation
 January 3, 2022

©2021 CALIPER

Discussion

Which map(s) do you prefer?

What modification(s) would make your preferred map(s) even better?

Possible:
Narrowing to
“focus” map(s)

Provide:
Direction on
new/revised map(s)

